

# 709 N. Solar Drive

## \$244,900



[www.709Solar.com](http://www.709Solar.com)

### Room Dimensions

Living Room: 14x14

Dining Room: 14x9

Kitchen: 14x10

Master: 14x14

Bedroom 2: 12x11

Bedroom 3: 13x11

Bedroom 4: 13x11

### Square Footage:

Main: 1325

Lower: 1225

Total: 2550

### Bathrooms:

Main: 2 Full

Lower: 1 Full



**Listing Agent: Josh Aberson**

**Cell: 521.6158**

**Email: [josh@GreenAcreInc.com](mailto:josh@GreenAcreInc.com)**

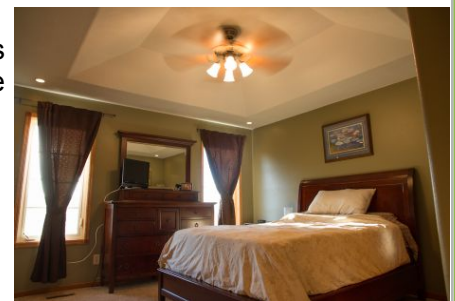
**[www.GreenAcreInc.com](http://www.GreenAcreInc.com)**

**@JoshAberson**

## GreenAcre

REAL ESTATE

Clean East side ranch walkout. This house is a great buy with tons of features including: stone counters, prewired home audio, tile floors, fully landscaped w/ retaining walls, 6 panel doors, 92% efficient furnace, heated 3 stall garage, and exquisite architectural detailing. Main level features open great room with vaulted ceilings, tiled entry, and gas fireplace. Spacious kitchen with new granite tops, breakfast bar, tile backsplash, and stn stl app. Main level mudroom/laundry. Master suite has awesome cove ceiling, his and hers closets, and tiled shower with jacuzzi tub. Walkout lower level has TONS of natural light and open great room. Plenty of room for extra storage as well as new outdoor shed on cement slab. Fabulous private yard with covered front patio, back deck, and custom brick fire pit. Superb attention to detail.



Lot Size: 15,870 sq ft.

Year Built: 2005

Taxes: \$3259.28

Garage: 3 Stall - Oversized

Schools: Anne Sullivan Elem.

Whittier Middle

Washington High